



# MODEL 151SR GLASSLANE TURNSTILE

## PEREY TURNSTILES

245 WESTCHESTER AVE, UNIT 866 PORT  
CHESTER, New York 10573, USA

Tel. 203-333-9400

[www.TURNSTILE.com](http://www.TURNSTILE.com)



Since 1913  
5 Year Warranty

Through the Generations,  
People Turn to Perey.



# MODEL 151 SR GLASSLANE TURNSTILES



## A Unique, Self-Storing Glass-Panel Turnstile.

Perey Turnstiles has cracked-the-code on combining glass panel barriers with narrow mechanism enclosures and kneecap-friendly panel opening even if you are accidentally going the wrong way and activating an alarm.

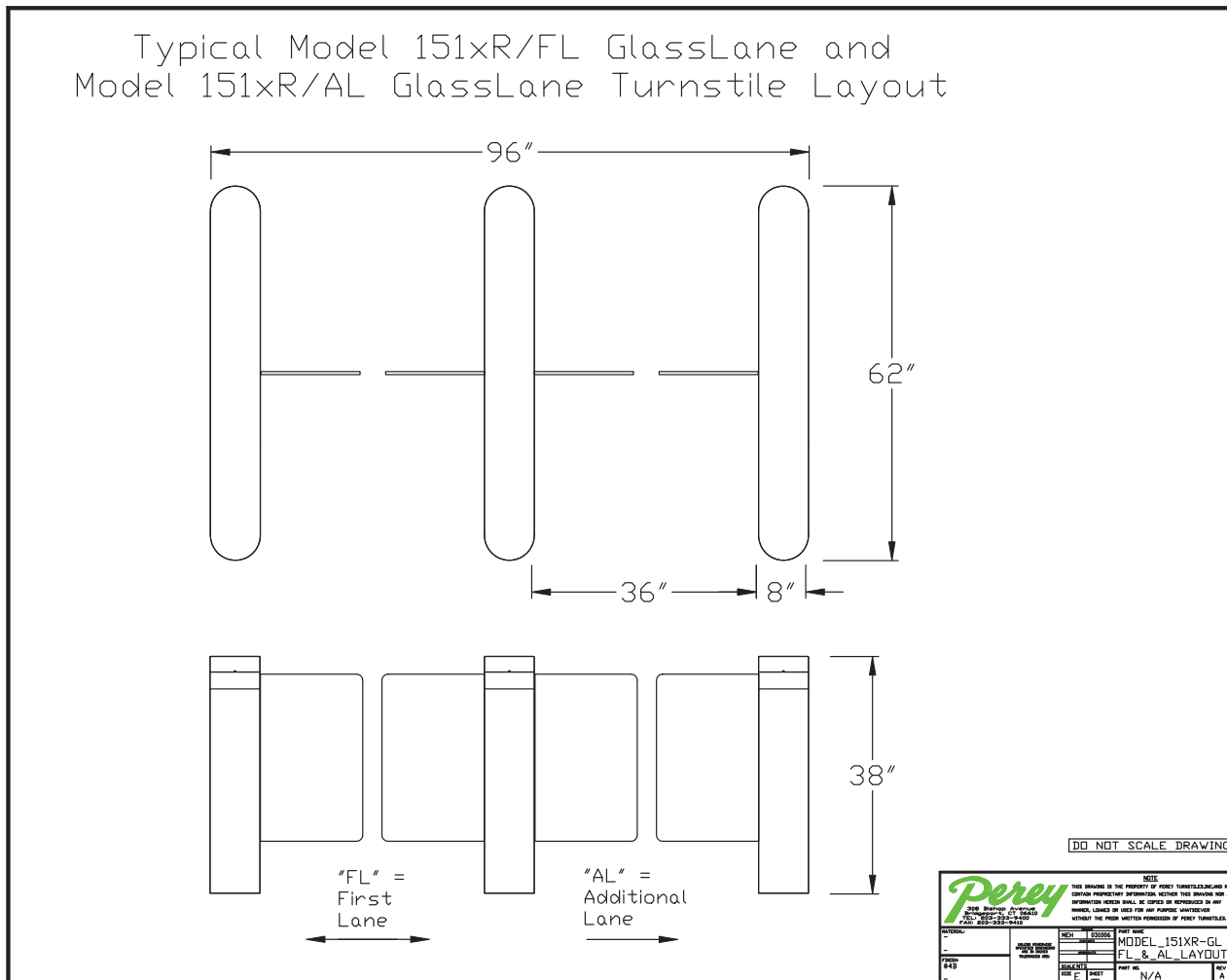
Until now turnstile makers have had a choice when it comes to glass panel turnstiles... either rotate the glass panels out of the way and occasionally do damage to the unwary kneecap or rotate the glass panels into absurdly huge housings that take up entirely too much space in a lobby.

Our GlassLane Turnstile panels are withdrawn into the cabinets WHILE pivoting thus getting safely out of the way into elegantly slim cabinets quickly and quietly.

Like all of our bi-parting barrier Turnstiles, this model has one or two passage barring panels that allow or prevent passage. An array of optical sensors monitors the passageway and provides optical-turnstile alarm functionality. Once the barrier has dropped out of the passageway, the unit becomes a completely functional optical turnstile.



# MODEL 151 SR GLASSLANE TURNSTILES



We have been manufacturing Optical Turnstiles since the late 1950's. We have often found that since Optical Turnstiles do not have barriers, the timing of when alarms are triggered and the pattern of traffic flow has a far greater impact on Optical Turnstile use than they have on Tripod Turnstile use (when there is a barrier people tend to be sure they are allowed to pass through long before they are in the turnstile's passageway).

By adding glass panels, the GlassLane Turnstile provides a compromise between the greater security of a tripod turnstile and the openness of an optical turnstile.

We have recently added a remote programming feature to our Optical Turnstile controller. Our new "SuperController" can be remotely programmed to meet a customer's changing requirements. This can be accomplished without the need for a factory technician's visit.

When operational requirements change, simply call us with the new requirements and we will e-mail you the new programming, upload and test the new program from a laptop computer.



## GlassLane Turnstile Basic Functions

- Signal timing:

The turnstiles REQUIRE a maximum 250 ms and a minimum 100 ms contact duration. If your system cannot meet this spec then it can be accomplished using a timing relay.

- Standard software functions:

Card in/out: The panel(s) opens after the turnstile receives the proper input signal and sensors monitor the passageway to be clear of persons until the exit sensor is passed. During passage of the authorized person, the passageway is monitored for "Piggybacking" unauthorized persons and if detected, sounds an audible alarm.

Free Exit: The panel(s) opens upon entry into the passageway and sensors monitor the passageway to be clear before raising the arm. Sensors also monitor for wrong way travel when the arm is down during free exit.

Group Entry: The panel(s) opens upon receipt of a continuous signal at the Group Entry terminals. Once the signal is removed, the panel(s) close after the standard lane clearance.

Fire Open: The panel(s) opens upon receipt of a continuous signal at the Fire open terminals. Once the signal is removed, the panel(s) close after the standard lane clearance.

- Standard Alarms:

Get back alarm: Alarm beeps upon initial unauthorized entry into passageway.

Arm Proximity alarm: Alarm sounds continuously upon unauthorized arm approach.

Crawl alarm: Alarm sounds continuously after detecting a crawl through attempt.



## Model 152SR GlassLane Turnstile Specifications

### Turnstile Cabinet

ANSI #304 Stainless Steel with #4 brushed finish 12 gage. Full height standing rib reinforced design, double wall (cavity) construction. 3/16" thick ANSI #304 Stainless Steel base plates. No exposed welds.

### Optical Electronics

Passageway monitored by an array of 32 coded infrared sensors and emitters and one "SuperController" primary and secondary of the latest generation. Emitters and sensors installed in the cabinet such that normal abuse will not reduce the signal or ability to read the signal. Typical ¼" tailgating detection capability. "SuperController" capable of being programmed by the owner for changes in functions and alarms without the need for a factory technician's visit.

### Motors, Mechanics and Glass Panels

DC servo motor operation of the glass panel(s). All bearings sealed and self-lubricating. Motion controlled by torque-limiting controller and position sensors. Independent two-way controls. Breakaway opening force of under 60N and fail-safe opening force under 60N. Glass panel height 35" to 48" available (local codes apply).

### Connectivity

WiFi over 802.11 b/g or 802.15.4, XSC Long Range, Bluetooth, TCP/IP, Serial, Parallel, USB, simple multiple-dry contact available.

### Throughput

60 people passing per minute. Bi-directional.

### Opening Time

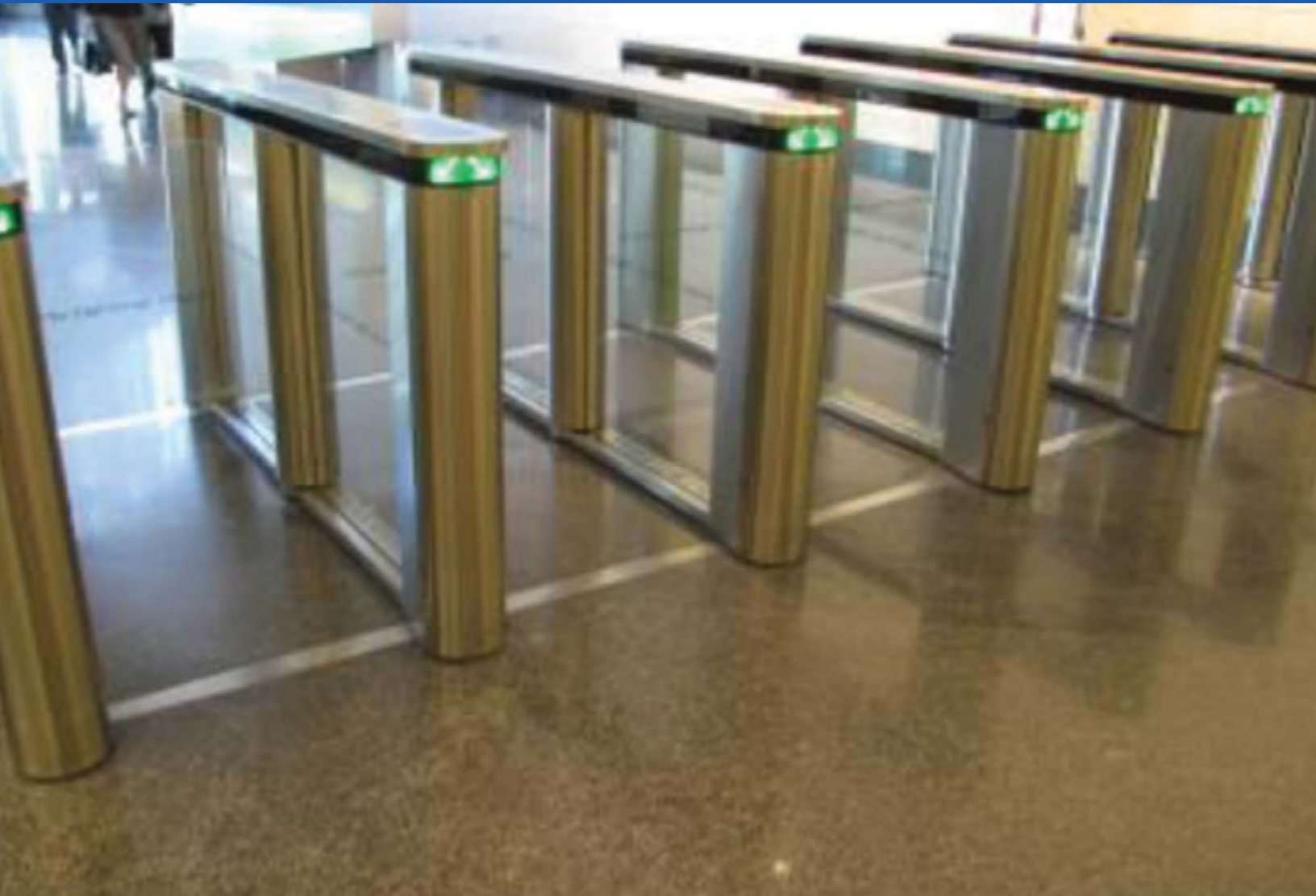
1.3 Seconds

### Alarms

Volume adjustable Piezo electric sounders and courtesy chimes. Human voice response available.

### Finish

All stainless steel surfaces shall have a #4B brushed finish. No exposed fasteners, sharp edges or protrusions.



## MODEL 151SR GLASSLANE TURNSTILES

### PEREY TURNSTILES

245 Westchester Avenue, Unit 866 Port

Chester, New York 10573 USA

Tel. 203-333-9400

[www.TURNSTILE.com](http://www.TURNSTILE.com)



Since 1913

5 Year Warranty

Through the Generations,  
People Turn to Perey.