



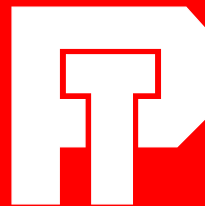
MODEL 139SS OPTICAL TURNSTILE

PEREY TURNSTILES

245 WESTCHESTER AVE, UNIT 866 PORT
CHESTER, New York 10573, USA

Tel. 203-333-9400

www.TURNSTILE.com

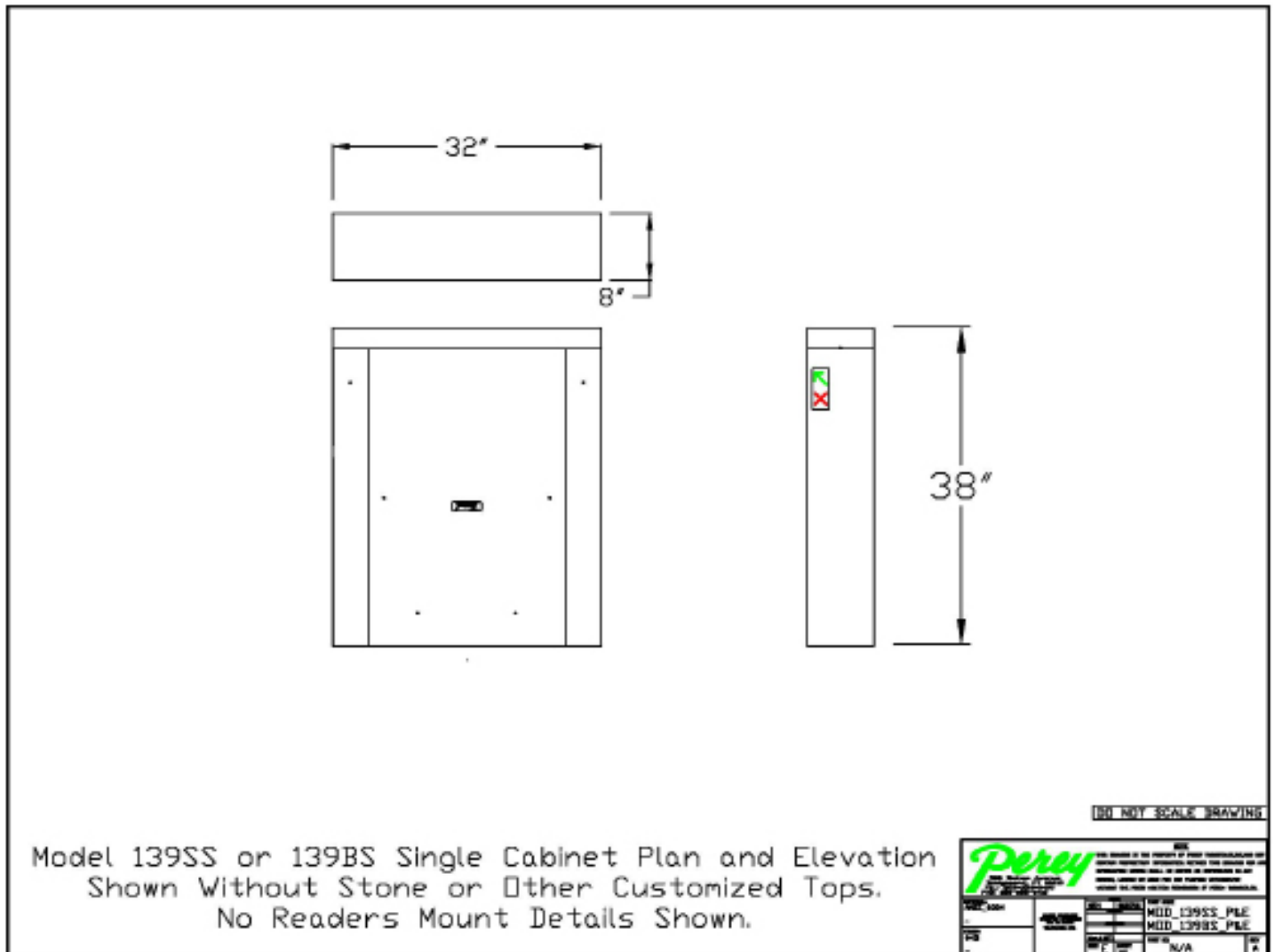


Since 1913
5 Year Warranty

Through the Generations,
People Turn to Perey.



MODEL 139SS OPTICAL TURNSTILE



Another in the family of Perey Optical Turnstiles that began with our first model in 1958.

The Model 139SS is designed for use in stadium suite access areas, casino lobbies, amusement park rides and other areas where a count is required but turnstile lanes cannot have obstructions.

The Model 139SS includes an ANSI #304 stainless steel cabinet. It has an array of industrially-hardened aperture controlled sensors that monitor the passageway. The "brain" of the Model 139SS is our new "SuperController".

We have recently added a remote programming feature to our Optical Turnstile controller. Our new "SuperController" can be remotely programmed to meet a customer's changing requirements. This can be accomplished without the need for a factory technician's visit.

When operational requirements change, simply call us with the new requirements and we will e-mail you the new programming, upload and test the new program using a laptop computer.

Short Form Specification

WEIGHT: Fixed 170 lbs. Net - 210 lbs. crated.

COVER: ANSI #4 Stainless steel with #4 finish, .078" thick, 0.25" radii corners, sides 2.5" deep.

CABINET: ANSI #4 Stainless steel with #4 finish. Welded standing rib reinforced design double wall (cavity) construction. Each wall .078" thick, 1/4" thick stainless steel base plate. Electronics housing with access door and two locks.

OPTICAL TURNSTILE ELECTRONICS: The passageway shall be monitored by an array of 16 industrially hardened water and oil sealed coded infrared sensor arrays and one "SuperController" of the latest generation. Emitters of the coded infra-red signal shall be in the cabinet opposite the primary arm mechanism. The optical turnstile shall have intelligence capable of the operational functions and alarm functions below. It shall be capable of being programmed by the owner for changes in functions and alarms without the need for a factory technician's visit.

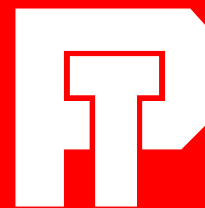
All of our Optical Turnstiles are programmable to allow the following features:

- Uni-Directional Operation
- Bi-Directional Operation
- Remote "Lockout" Of One Or Both Directions
- Unauthorized Entry Alarm Local and Remote
- Unauthorized Exit Alarm Local and Remote
- Piggy Backing Alarm Local and Remote
- Package Only Entry Alarm Local and Remote
- Package Only Exit Alarm Local and Remote
- Slow Travel Alarm Local and Remote
- Walk Away Alarm Local and Remote
- Crawl Alarm Local and Remote

The Model 139SS can be customized to fit the particular needs of an application. Custom features such as marble tops, added or reduced length and customized reader mounting is available along with customized indicator lights.

MODEL 139SS OPTICAL TURNSTILE

PEREY TURNSTILES
245 WESTCHESTER AVE, UNIT 866 PORT
CHESTER, New York 10573, USA
Tel. 203-333-9400
www.TURNSTILE.com



Since 1913
5 Year Warranty

Through the Generations,
People Turn to Perey.