



Swing Gate #1256

Available in both mechanical and electronically controlled versions, this accessible gate is ideal for sports and amusement applications. It is light enough to allow ease of use but ruggedly enough built to withstand constant use. The Swing Gate #1256 has a clear opening of 36" and is available in stainless steel or brass.

Section 10450 Pedestrian Control Devices Swing Gate #1256

PART ONE - GENERAL

1.01 Submittals

Shop Drawings: Drawings showing individual turnstile and gate construction, overall dimensions for installation, and installation details including trim and accessories.

1.02 Product Handling

Store turnstiles and gates in a dry well ventilated place in the original crating and protective wrappings and protect all finishes from damage during handling.

PART TWO - PRODUCTS

2.01 Materials and standard of quality:

A. Accessible swing gates Model #1256 as manufactured by:

**Perey Turnstiles
308 Bishop Ave.
Bridgeport, Ct. 06610**

B. Accessible Gates

1. Weight

75 lbs. net, 95 lbs. crated

(continued)

2. Construction

ANSI #304 stainless steel 16 gage seamless 2" O.D. tubing with a #4B brushed finish. Gravity motivated closure without springs. All welded. 7" diameter mounting flanges or below grade mounting pipes.

3. Locking Elements

Must select electronic unlocking system, mechanical latching or no locking control.

4. Acceptability

36" clear opening. 38" post height. Must meet acceptable standards for use by people with physical challenges.

F. Finish

All stainless steel surfaces shall have a #4B brushed finish. All painted surfaces shall be easily reparable at site. No exposed fasteners, sharp edges or protrusions shall be allowed.

G. Fabrication

1. Swing gates shall be fabricated from ANSI #304 stainless steel. No spring assisted closer shall be accepted.

PART THREE - EXECUTION

3.01 Installation

- A. Install swing gates in accordance with manufacturer's instructions and in locations in accordance with manufacturer's instructions and architectural drawings. Insure a smooth, level and rigid surface.
- B. Use at least four 3/8" expansion anchors of sufficient length to insure a minimum 4" penetration of slab per gate post.
- C. Perform all wiring in accordance with manufacturer's instructions. Insure all interfaces allow one passage per unlocking impulse regardless of impulse duration. Insure virtually zero radio frequency interference from all mechanisms and zero power surges to control circuits.

PART FOUR - WARRANTY

4.01

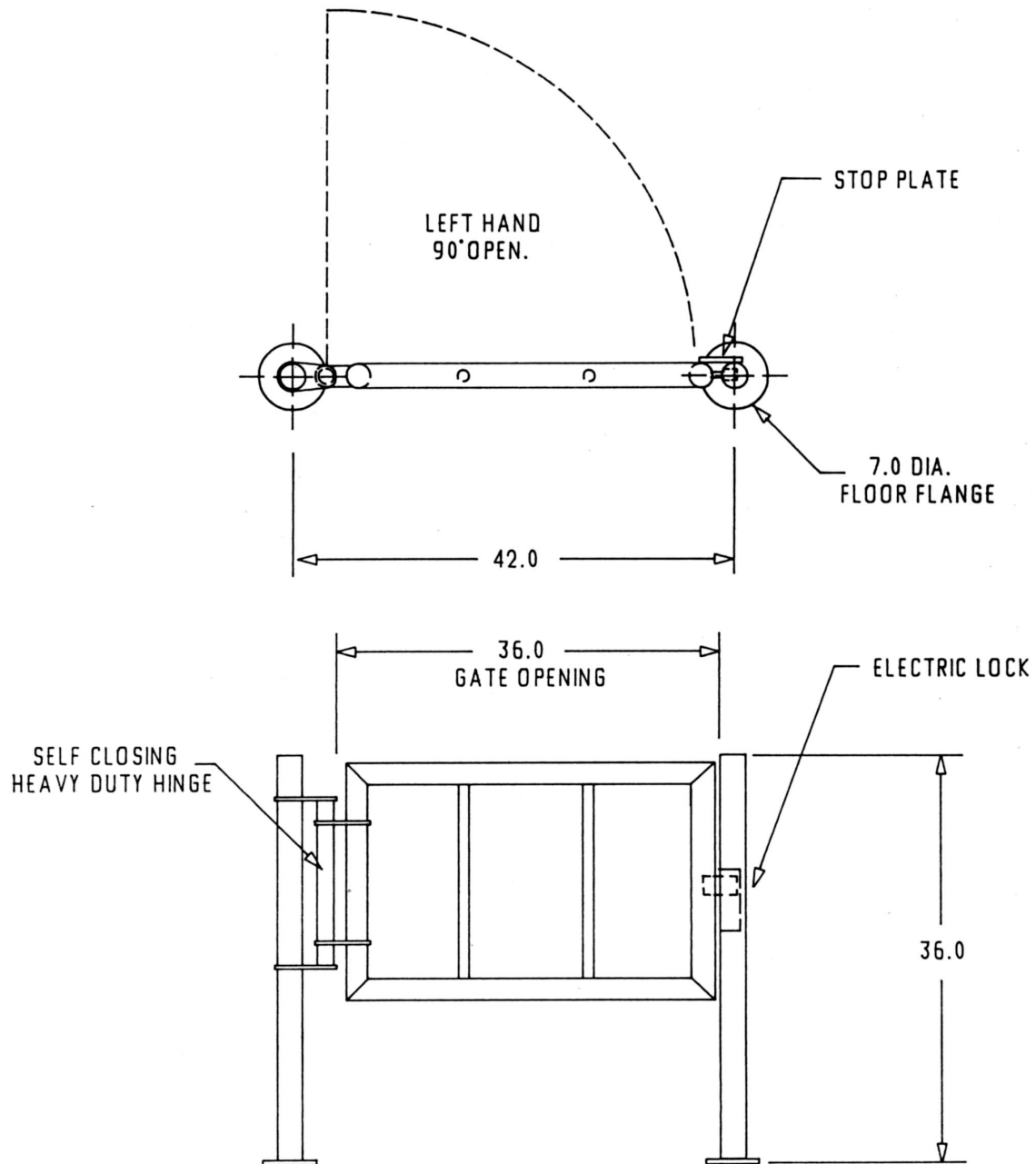
All parts and materials shall be structurally sound and free from defects in materials and workmanship under high traffic use and service for a period of one year from date of shipment.

(continued)

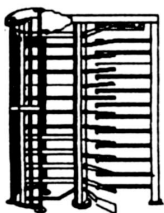
4.02

Spare parts availability shall be for a period of not less than thirty years from the date of shipment. Parts shall be continuously available at the factory for same day delivery seven days per week. Manufacturer reserves the right to change and improve design and processes but shall maintain parts interchange ability with equipment at site for this same period.

Swing Gate #1256 (left hand)



GATE AND POSTS: 2.0" DIA. POLISHED STAINLESS STEEL.
COMPLETE WITH POWER SUPPLY AND PUSH BUTTON FOR GATE RELEASE.



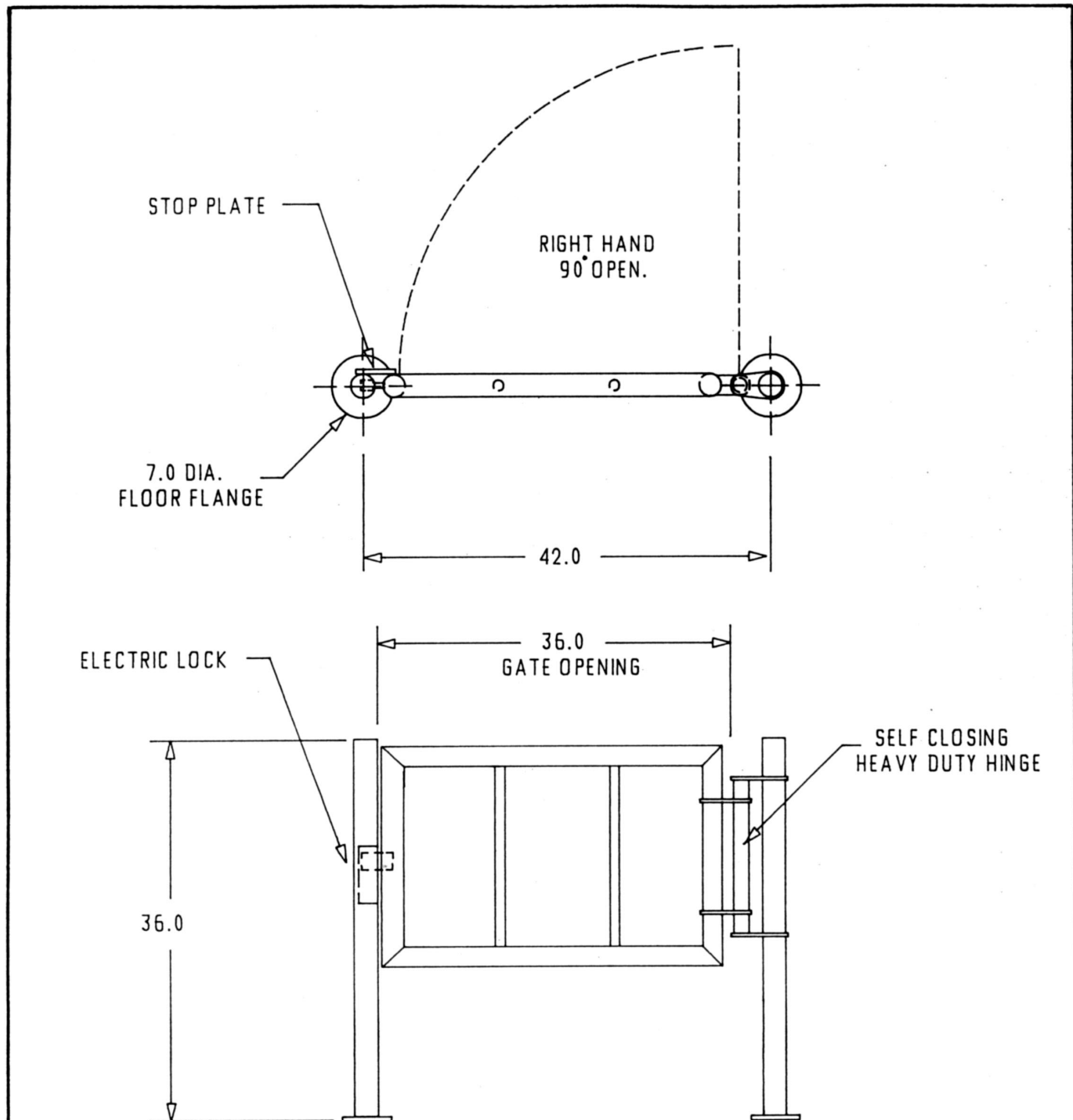
PEREY TURNSTILES, STAMFORD, CT.

655 WASHINGTON BLVD. 06901 TEL. (203) 961-8444 FAX. (203) 961-8855

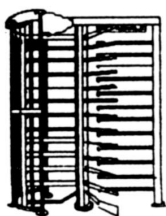


TOL'S	CUSTOMER: PEREY MFG. CO..	DRWN: JEM	REV.
XX = N/A	DWG. NO.: 1256LH	DATE: 6-16-93	
XXX= N/A	DESC: ELECTRIC ACCESS GATE, LH.	SCALE: NONE	
ANG. N/A			

Swing Gate #1256 (right hand)



GATE AND POSTS: 2.0" DIA. POLISHED STAINLESS STEEL.
COMPLETE WITH POWER SUPPLY AND PUSH BUTTON FOR GATE RELEASE.



PEREY TURNSTILES, STAMFORD, CT.

655 WASHINGTON BLVD. 06901 TEL. (203) 961-8444 FAX. (203) 961-8855



TOL'S	CUSTOMER: PEREY MFG. CO..	DRWN: JEM	REV.
XX = N/A	DWG. NO.: 1256-RH	DATE: 6-16-93	
XXX = N/A	DESC: ELECTRIC ACCESS GATE, RH.	SCALE: NONE	
ANG. N/A			